

11631 E Cortez DR Sttsdale

Close to the tee

PROPERTY DETAILS



Listing Price: **\$650,000**

Listing Address: 11631 E Cortez DR

Sttsdale AZ 85259

Bedrooms: 3

Full Baths: 2

Partial Baths: 1

SQ FT: 1867

Garage: 2 Car

QR Code:

On a SmartPhone?
Scan the QR code
to see this listing



PROPERTY DESCRIPTION

Wake up, your dream can be a reality.....

If you've always dreamed of having your morning coffee while gazing out over the golf course fairways with the smell of freshly mowed grass and the sounds in the distance of the rainbirds watering the greens, then this villa was meant for you.

The dual master suites and a third bedroom suitable for guests or office converge on a spacious great room with formal dining, art niches and pot shelves making this an entertainer and collectibles dream. The cooks kitchen, which is open to casual dining, features ample work space for meals of a cozy or grand style. And what better place to cook while looking out over the golf course and city views day or night.

The privacy from the street and the golf course give you the best of all worlds; a feeling of seclusion and yet with no one crowding your shoulders.

And of course it's Arizona and it's all about the outdoors. Expansive flagstone patios, multiple shaded areas, a private spa and lots of entertaining space or just the quiet get away to read a great book or nap in the glow of the sun, blue skies and warm breezes.

Located within the gated community of Ancala Country Club with various membership levels available for purchase, your resort style living can be a reality. Contact www.ancalacc.com for more on the membership.

And by the way, might you be interested in the furnishings? Contact us for Seller exclusions and purchase options by separate agreement. Welcome home, you've earned it."

CONTACT INFORMATION



Gayle Henderson PC

RE/MAX Excalibur

scottsdalelife.com

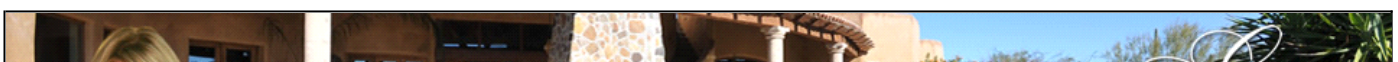
8510 E Shea Blvd #100

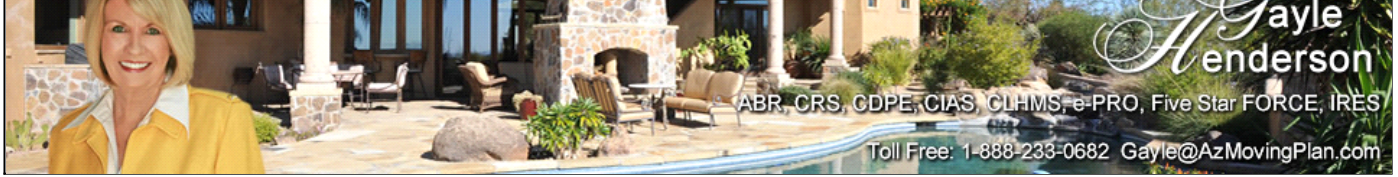
Scottsdale AZ 85255

602-850-4335

1-888-582-5656

gayle@thegaylehendersongroup.com





ABR, CRS, CDPE, CIAS, CLHMS, e-PRO, Five Star FORCE, IRES

Toll Free: 1-888-233-0682 Gayle@AzMovingPlan.com



Equal Housing Opportunity

Property information deemed reliable but not guaranteed and should be verified.

Copyright © 2003-2012 Real Pro Systems LLC. All rights reserved.